



**BONRIX EMBEDDED
INNOVATIONS**

3.5 inch Dynamic QR Code Scanner Display (JPEG Based)

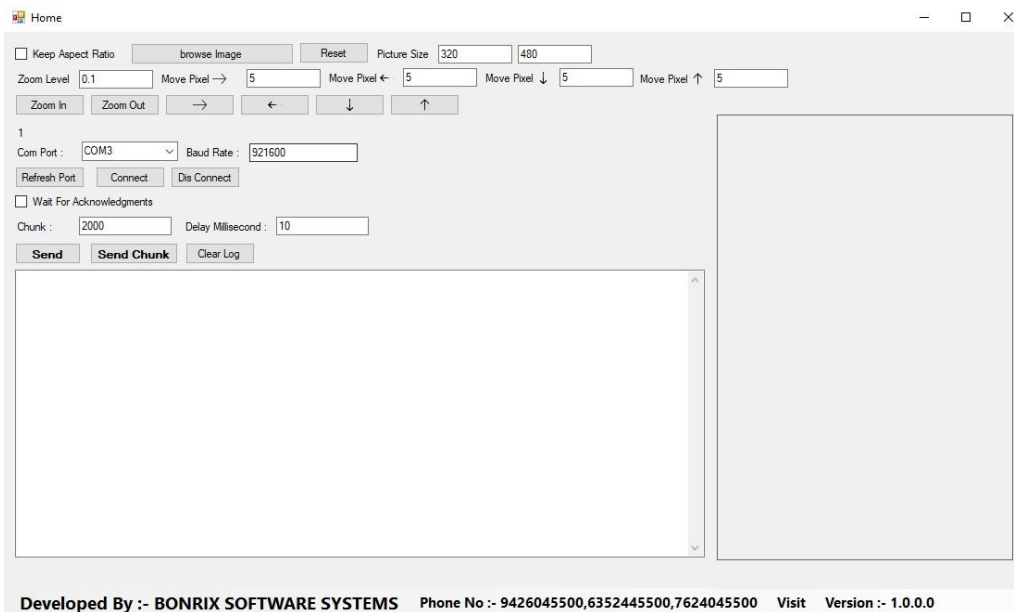
Model: BEI-DQR-111-IMG

Instruction: Connect your port (COM1, COM2... ..) with Baud Rate: 921600 using with your serial port terminal.

Follow this link for serial port test utility:

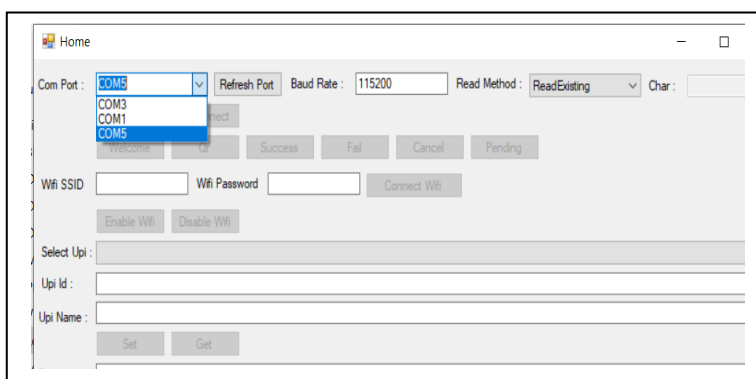
http://www.embedded-innovations.com/Downloads/DesktopSoftware/3.5_inch_usb_jpeg_image_processor.exe

Step 1: Home Screen:



Step 2: Select port:

Select Your Com Port And Click on **Connect** button.

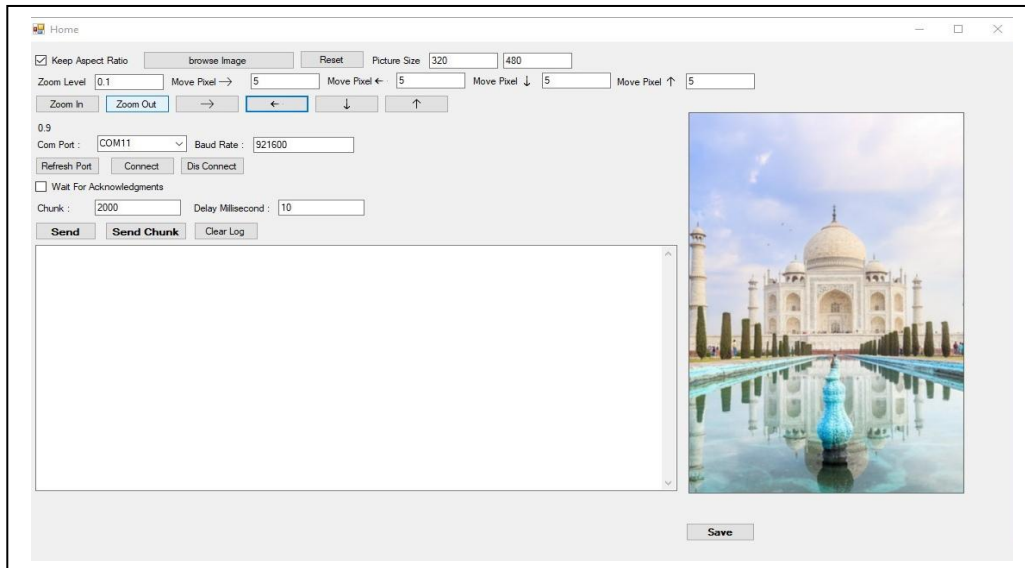




**BONRIX EMBEDDED
INNOVATIONS**

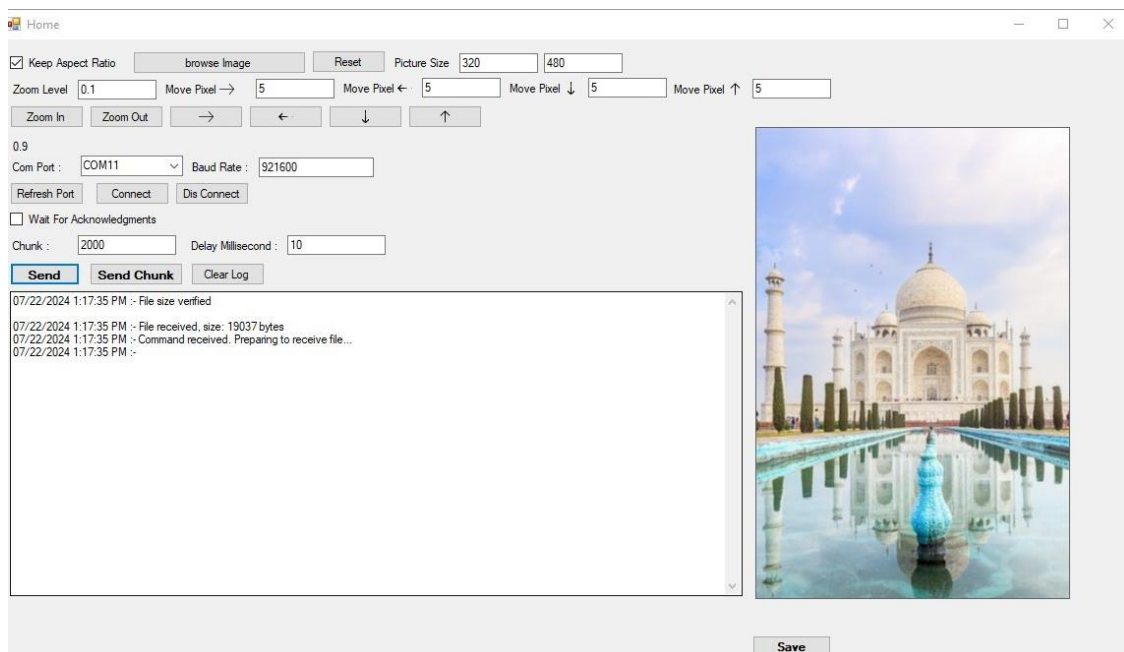
Step 4: Select Image:

First Select **Keep Aspect Ratio** And then Click on **browser Image** to select your Image.



Step 5: Upload Image:

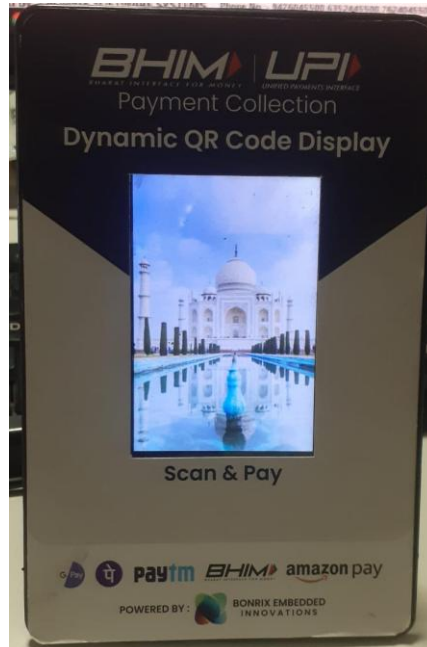
After selecting the image you can adjust your image using **Zoom In, Zoom Out, →, ←, ↑, ↓** Button and Click on **Send** button.





**BONRIX EMBEDDED
INNOVATIONS**

Step 6: Output:



Thank you



**BONRIX EMBEDDED
INNOVATIONS**

ADDRESS

Bonrix Embedded Innovations

A-701 Dev Aurum Commercial,

Nr. Anand Nagar Cross Road,

Prahlad Nagar, Satellite,

Ahmedabad, Gujarat 380015

Contact On : +91-9409745500,+91-9429045500

info@embedded-innovations.com

embeddedinnovations.bonrix@gmail.com



**BONRIX EMBEDDED
INNOVATIONS**

Visit Us On

WEBSITE: <http://www.embedded-innovations.com/>

FACEBOOK: <https://www.facebook.com/BonrixEmbeddedInnovations/>

TWITTER: <https://twitter.com/BonrixEmbedded>

INSTAGRAM: <https://www.instagram.com/BonrixEmbeddedInnovations/>

LINKEDIN: <https://www.linkedin.com/company/bonrix-embedded-innovations/>

YOUTUBE: <https://www.youtube.com/@Bonrix-Embedded-Innovations>