



**BONRIX EMBEDDED  
INNOVATIONS**

## **3.5 inch Dynamic QR Code Display With Image Rotation Display for Promotions and WiFi HTTP API**

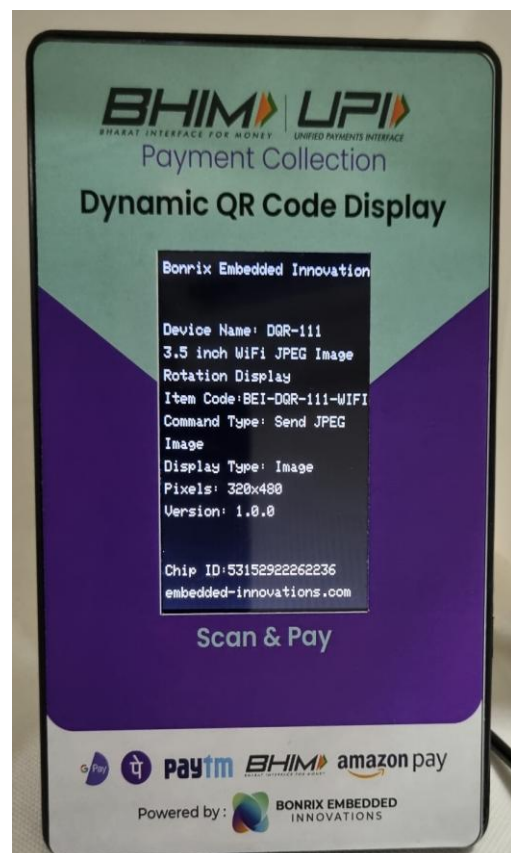
**Model: BEI-DQR-111-WIFI**

### **Step 1: Display message:**

"Bonrix Embedded Innovation"

**Device Name:** DQR-111  
**3.5 inch WiFi JPEG Image Display**  
**Item Code:** BEI-DQR-111-WIFI  
**Command Type:** Send JPEG  
**Display Type:** Image  
**Pixel:** 320x480  
**Version:** 1.0.0

**Chip ID:** "531\*\*\*\*\*"  
embedded-innovations.com





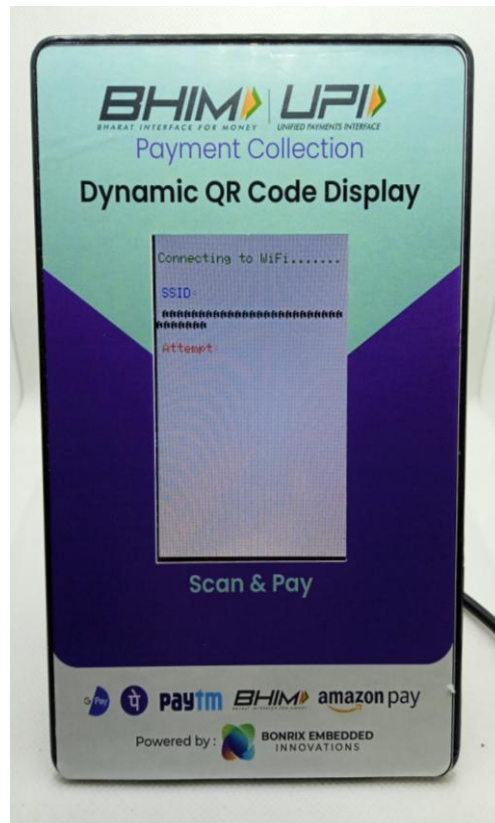
**BONRIX EMBEDDED  
INNOVATIONS**

## Step 2: Find Wifi Connection:

Connecting to Wifi.....

**SSID:** jioFiber-EASO

Attempt: .....



## Step 3: Hotspot Mode:

**IP:** 192.168.4.1

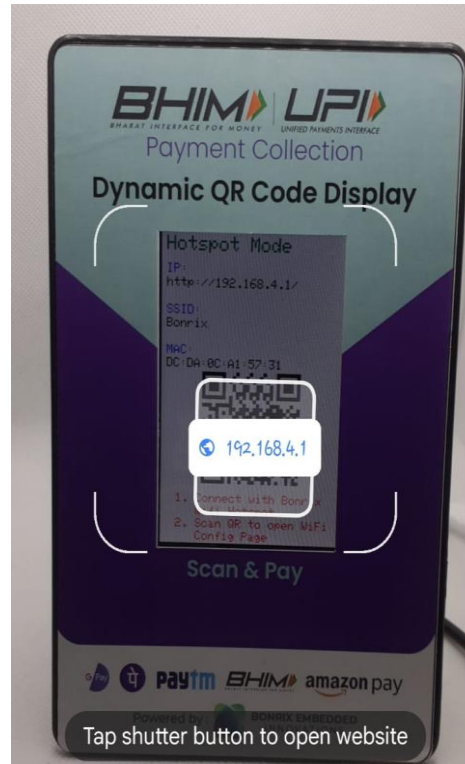
**SSID:** Bonrix

**MAC:** DC:DA:0C:A1:58:71

→ Scan QR to Open  
Wifi Config Page

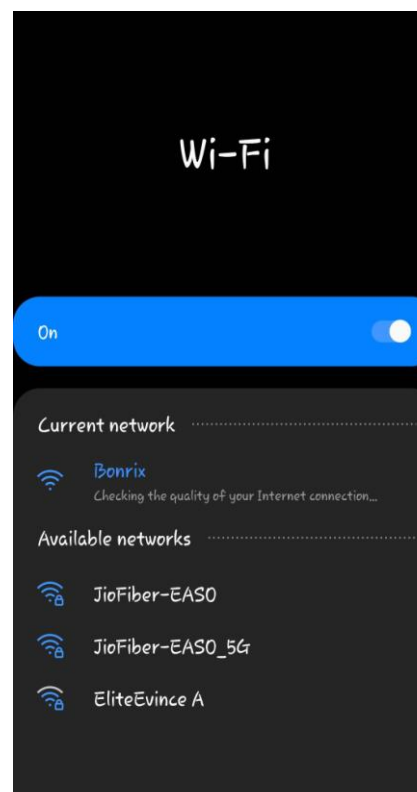


**BONRIX EMBEDDED  
INNOVATIONS**



#### **Step 4: Connect\*\*Bonrix\*\*Wifi:**

→Connect With\*\*Bonrix\*\*Wifi





**BONRIX EMBEDDED  
INNOVATIONS**

## Step 5: Wifi Config Page:

Select your Wifi Or Enter SSID And Password

For example:

**Wifi Name:-**JioFiber-EASO

**Password:-** \*\*\*\*\*

The screenshot shows a mobile application interface for updating WiFi credentials. At the top, there's a 'WiFi Credentials Update Page' header. Below it is a 'Scan' button. A list of detected WiFi networks is shown, including 'JioFiber-EASO', 'EliteEvince A', 'Airtel 9879105798', 'GSF8364', and 'CALWIN 4G'. Below the list are input fields for 'SSID:' (containing 'JioFiber-EASO'), 'Password:' (with masked characters), 'Static IP (Optional):', 'Subnet Mask (Optional):', and 'Gateway (Optional):'. A green 'Submit' button is at the bottom.

## Step 6: Wifi Mode:

**IP:** 192.168.29.7

**SSID:** JioFiber-EASO

**MAC:** DC:DA:0C:A1:58:70

→Scan QR for Upload Image



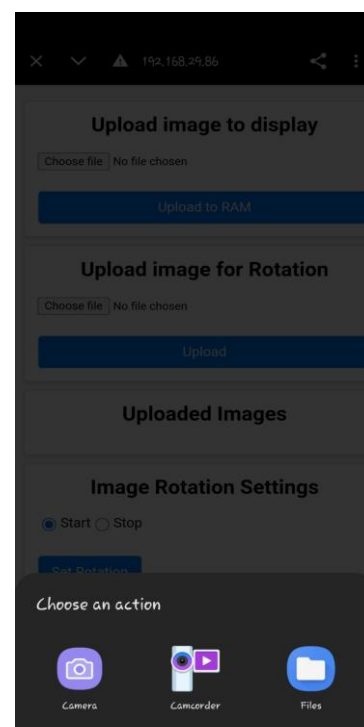
**BONRIX EMBEDDED  
INNOVATIONS**



## Step 7: Open Web Page:

→ Click on Choose File and Upload the image from Your Gallery.

**Note:** JPG Image must be 320\*480px

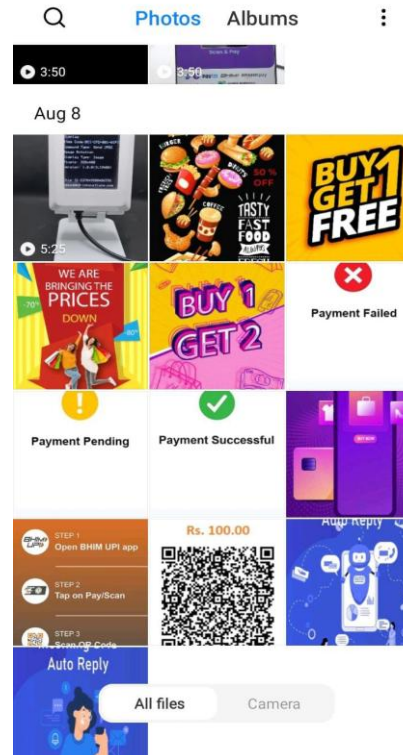




**BONRIX EMBEDDED  
INNOVATIONS**

### Step 8: Select image:

→ Select image from your gallery and click the upload button For Stable JPEG Image



### Step 9: Image Rotation

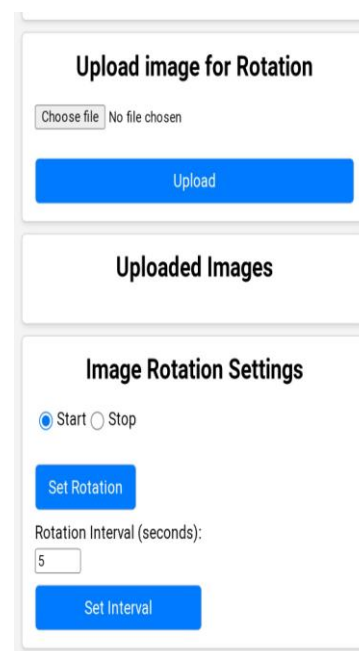
→ Choose File from your gallery and click the upload JPEG Image

**NOTE:** Choose atleast 2 image to roatate image function

→ After Upload the Image Select **Start** and Click on Set Rotation.

→ And Select **Stop** Option For Stop Image Rotation

→ You can set Rotation Interval according to your need





**BONRIX EMBEDDED  
INNOVATIONS**

## Step 10: Reset Wifi:

→ Click On RESET WIFI Button for  
Reset your Wifi

### Upload image for Rotation

No file chosen

### Uploaded Images

### Image Rotation Settings

Start  Stop

Rotation Interval (seconds):

### WiFi Reset

*Thank you*

---



## **ADDRESS**

### **Bonrix Embedded Innovations**

A-701DevAurumCommercial, Nr.

Anand Nagar Cross Road,

Prahlad Nagar, Satellite,

Ahmedabad, Gujarat 380015

**Contact On: +91-9409745500, +91-9429045500**

[info@embedded-innovations.com](mailto:info@embedded-innovations.com)

[embeddedinnovations.bonrix@gmail.com](mailto:embeddedinnovations.bonrix@gmail.com)



### **VisitUs On**

[WEBSITE: http://www.embedded-innovations.com/](http://www.embedded-innovations.com/)

[FACEBOOK: https://www.facebook.com/BonrixEmbeddedInnovations/](https://www.facebook.com/BonrixEmbeddedInnovations/)

[TWITTER: https://twitter.com/BonrixEmbedded](https://twitter.com/BonrixEmbedded)

[INSTAGRAM: https://www.instagram.com/BonrixEmbeddedInnovations/](https://www.instagram.com/BonrixEmbeddedInnovations/)

[LINKEDIN: https://www.linkedin.com/company/bonrix-embedded-innovations/](https://www.linkedin.com/company/bonrix-embedded-innovations/)

[YOUTUBE: https://www.youtube.com/@Bonrix-Embedded-Innovations](https://www.youtube.com/@Bonrix-Embedded-Innovations)